

# PrograBase 3

The multifunctional software for your Programat® furnace

Supported furnaces	Operating Systems	System requirements
Programat P 300 & P300/G2 Programat P 500 & P500/G2 Programat P 700 & P700/G2 Programat EP 3000 & EP 3000/G2 Programat EP 5000 & EP 5000/G2 Programat CS Programat S1 Programat S1 1600	Windows XP (incl. Microsoft .NET Framework 2.0* and Service-pack 2) Windows Vista Windows 7 Windows 8	Screen Resolution: 1024 x 768 Colours min. 256 RAM min. 256MB CPU: 1 GHz Min. 11 MB free storage Internet access

## Installation

The installation starts automatically once the CD is placed into the drive. Follow the instructions of the installation assistant.

PrograBase 3 may also be used without a ceramic furnace being connected to the PC. For data transfer and virtual operation, please connect the ceramic furnace with your computer (USB download cable is part of the furnace delivery form).

## Program start

Start PrograBase 3 via the Start menu of your computer once the installation has been completed.

Select a ceramic furnace

Virtual remote control

Program information

Navigation bar to select the function

The screenshot shows the PrograBase 3 main window. At the top, it displays 'Connected furnaces' with a list containing 'Programat P700 (Serial No.: 700237)'. Below this is a 'Furnace operation' section with a 'Program data' field and 'STOP' and 'START' buttons. A status bar shows 'Temperature: 431 °C', 'Program: P121: Gungge 13 - Shado/Stans', and 'Condition: Firing 1 (in progress)'. A section titled 'The selected furnace has the following properties:' lists 'Name of laboratory: Ivoclar Vivadent', 'Serial number: 700237', and 'Operating language: German'. A navigation bar on the left includes 'Protocols', 'Programs', 'Data backup', 'Ivoclar Vivadent Online', and 'Options'.

## Settings

With the "Options" button, the program settings can be defined.

Select your language from German, English, French, Spanish, Portuguese, or Italian

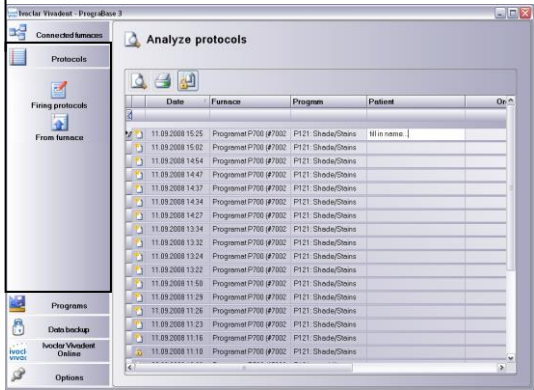
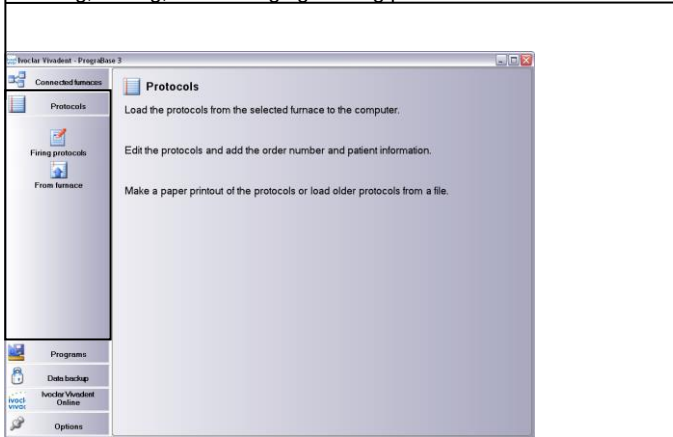
Set the desired temperature mode (Celsius or Fahrenheit)

The screenshot shows the 'Options' dialog box. It is titled 'Options' and contains the instruction 'Define your program settings.' There are two dropdown menus: 'Please select a language.' with 'English' selected, and 'Please select the temperature unit.' with 'Celsius' selected. Below these are fields for 'Connect furnaces via network' with 'From IP: 192.168.1.1' and 'to IP: 192.168.1.10'. There is also an 'Activate service mode' checkbox which is unchecked. The software version '2.0.1 built 02.09.2008' is shown at the bottom.

\*) If Microsoft .NET Framework 2.0 is not available on your computer, it will be installed together with the software. Required free storage space about 300 MB.

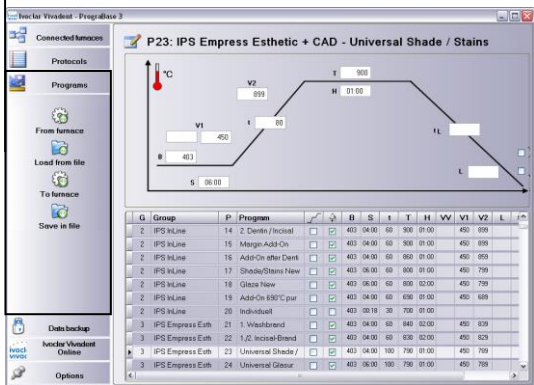
## „Protocols“ function

Loading, editing, and managing of firing protocols



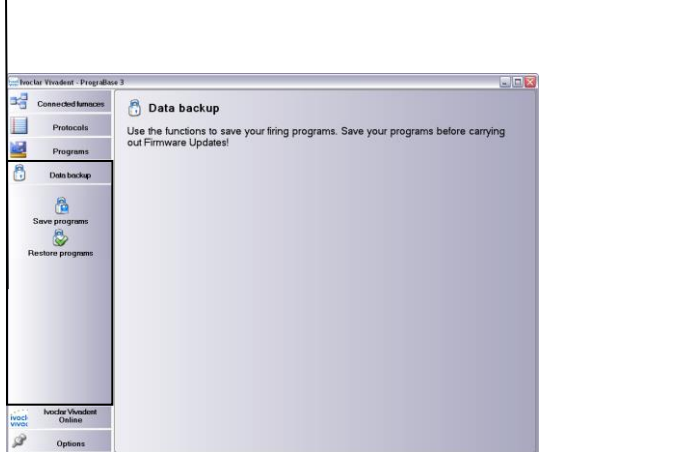
## „Programs“ function

Loading, editing, and managing of firing programs



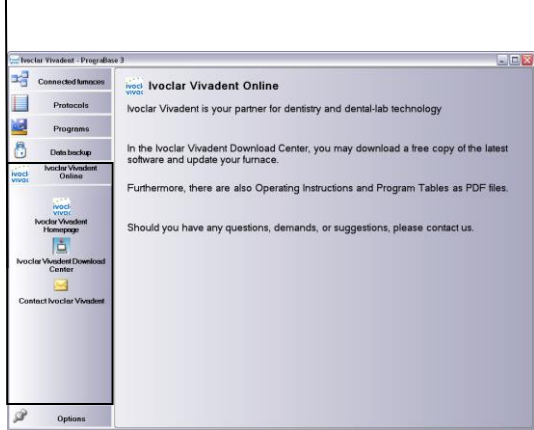
## „Save“ function

Saving of all program parameters at a click of the mouse



## „Ivoclar Vivadent Online“ function

Connection with the homepage of the manufacturer at a click of the mouse



Ivoclar Vivadent AG  
 Bendererstr. 2  
 FL-9494 Schaan  
 Principality of Liechtenstein  
 Phone +423 / 235 3535  
 Fax +423 / 235 33 60  
 www.ivoclarvivadent.com

Serviceline:  
 Tel. +423 / 235 36 36

